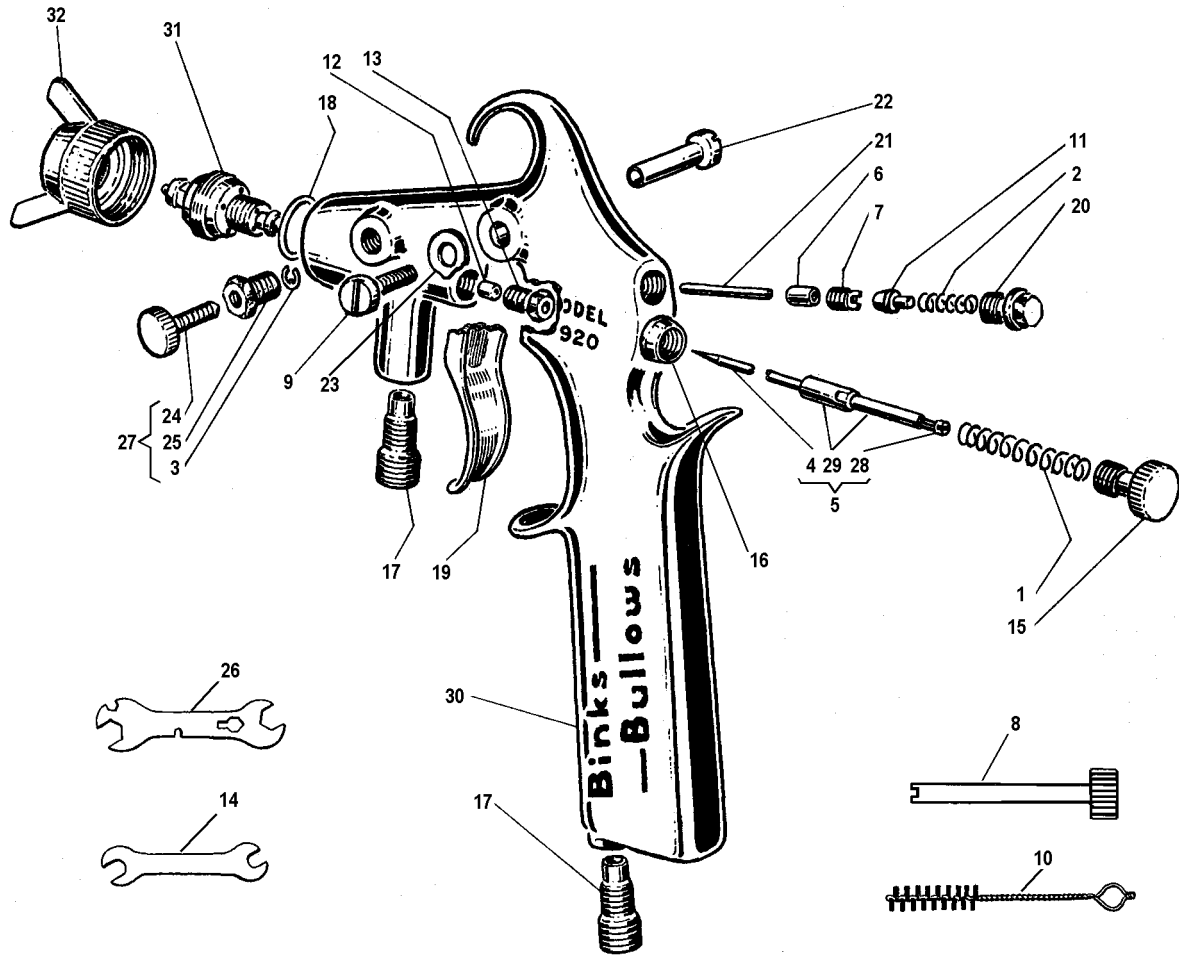


Model 920 Spray Gun



PARTS LIST

Ref. No.	Part No.	Description	Qty
1	160008	Material Spring	1
*	2	Air Valve Spring	1
	3	Circlip	1
	4	See Table 1	1
	5	See Table 1	1
*	6	Air Valve Packing	1
	7	Packing Screw	1
	8	Key	1
	9	Trigger Screw	1
	10	Gun Bush	1
	11	Air Valve	1
*	12	Needle Packing	1
*	13	Packing Screw	1
	14	Spanner	1
	15	Needle Control Screw	1
	16	Body Bushing	1
	17	Connection BSP	2
*	18	Gasket	1
	19	Trigger	1
	20	Air Valve Cap	1
	21	Air Valve Stem	1
	22	Trigger Stud	1
	23	Spacer	1
	24	184578	1

Model 920 Spray Gun

PARTS LIST (cont.)

Ref. No.	Part No.	Description	Qty
25	184579	Side Port Control Bush	1
26	184788	Spanner	1
27	184963	Side Port Control Assy.	1
28	185455	Locking Screw	1
29	185456	Needle End	1
30	200034	Gun Body	1
31	See Table 1	Material Nozzle	1
32	See Table 1	Air Nozzle	1

* Included in spares kit 250027

TABLE 1 : ORDERING INFORMATION

AIR NOZZLE, MATERIAL NOZZLE AND NEEDLE COMBINATIONS								
SPRAY GUN	MATERIAL NOZZLE			NEEDLE		AIR NOZZLE		
Part No. (cfm)	Part No.	Code	Bore	Part No.	Mat'l	Part No.	Code	Air Cons'm
101126	200363	K960	0.060", (1.5mm)	180187	STST	200836	K92S	(6.8) [11.6]
101110	200362	J940	0.040", (1.0mm)	180190	Nylon	200831	J92S	(6.8) [11.6]
101108	200362	J940	0.040", (1.0mm)	180190		200833	J92P	(6.8) [11.6]
101109	200362	J940	0.040", (1.0mm)	180190		200834	J92R	(1.7) [2.9]
101133	200360	J920	0.020", (0.5mm)	180190		200833	J92P	(6.8) [11.6]
101102	200360	J920	0.020", (0.5mm)	180190		200831	J92S	(6.8) [11.6]